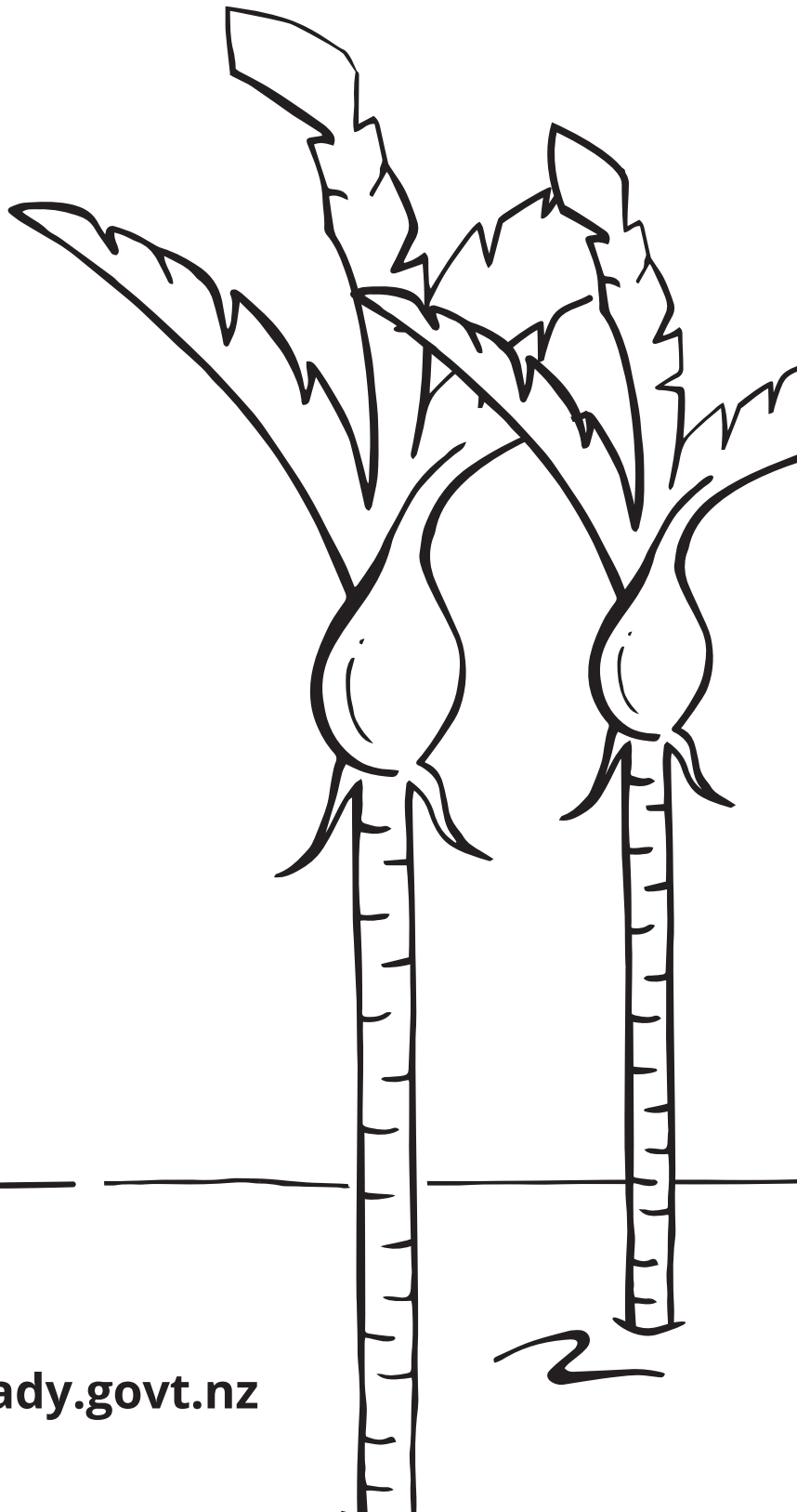
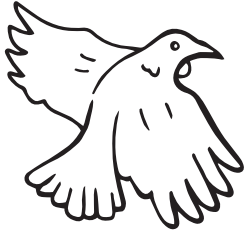


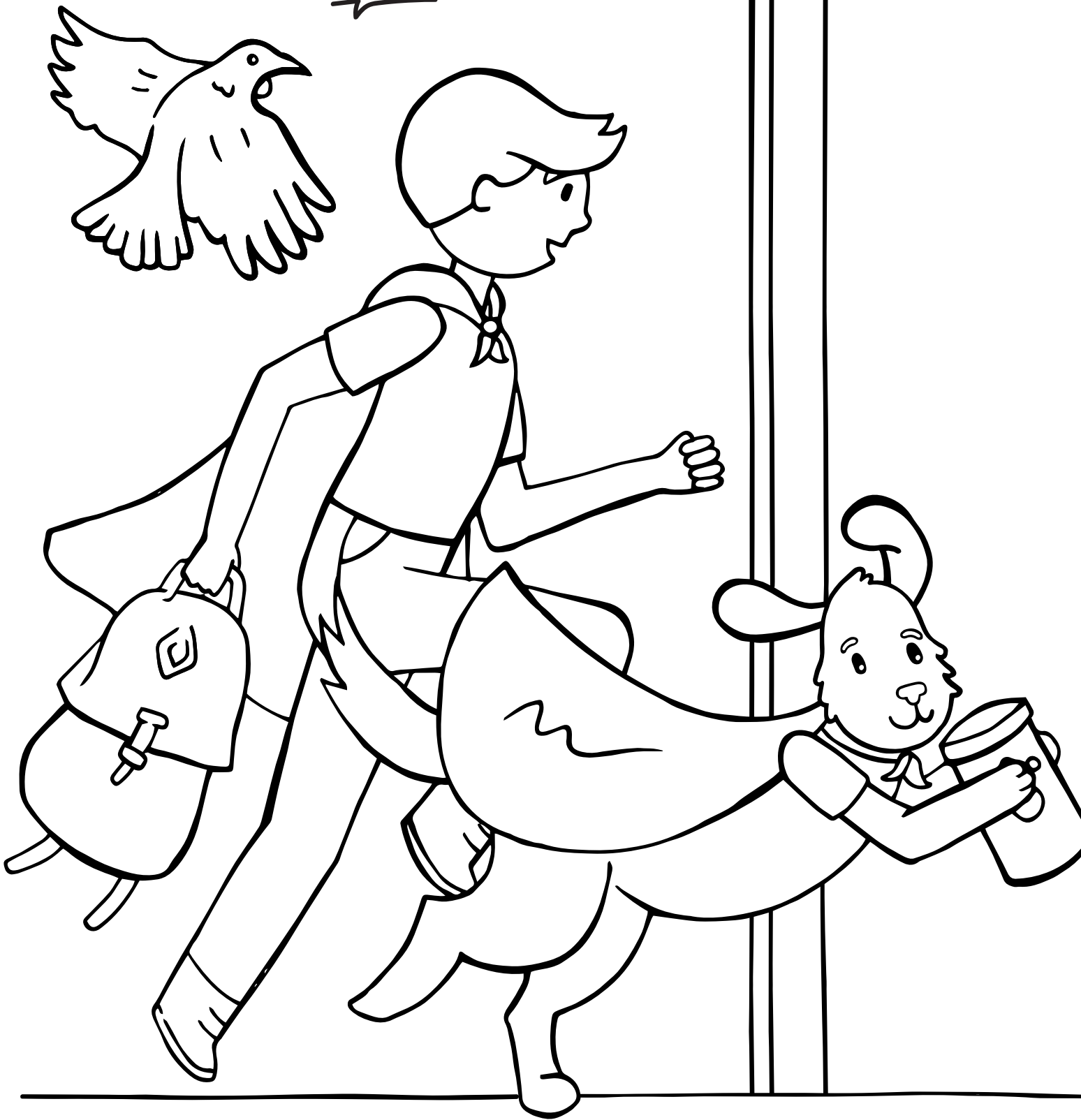
WHAT'S THE PLAN STAN?



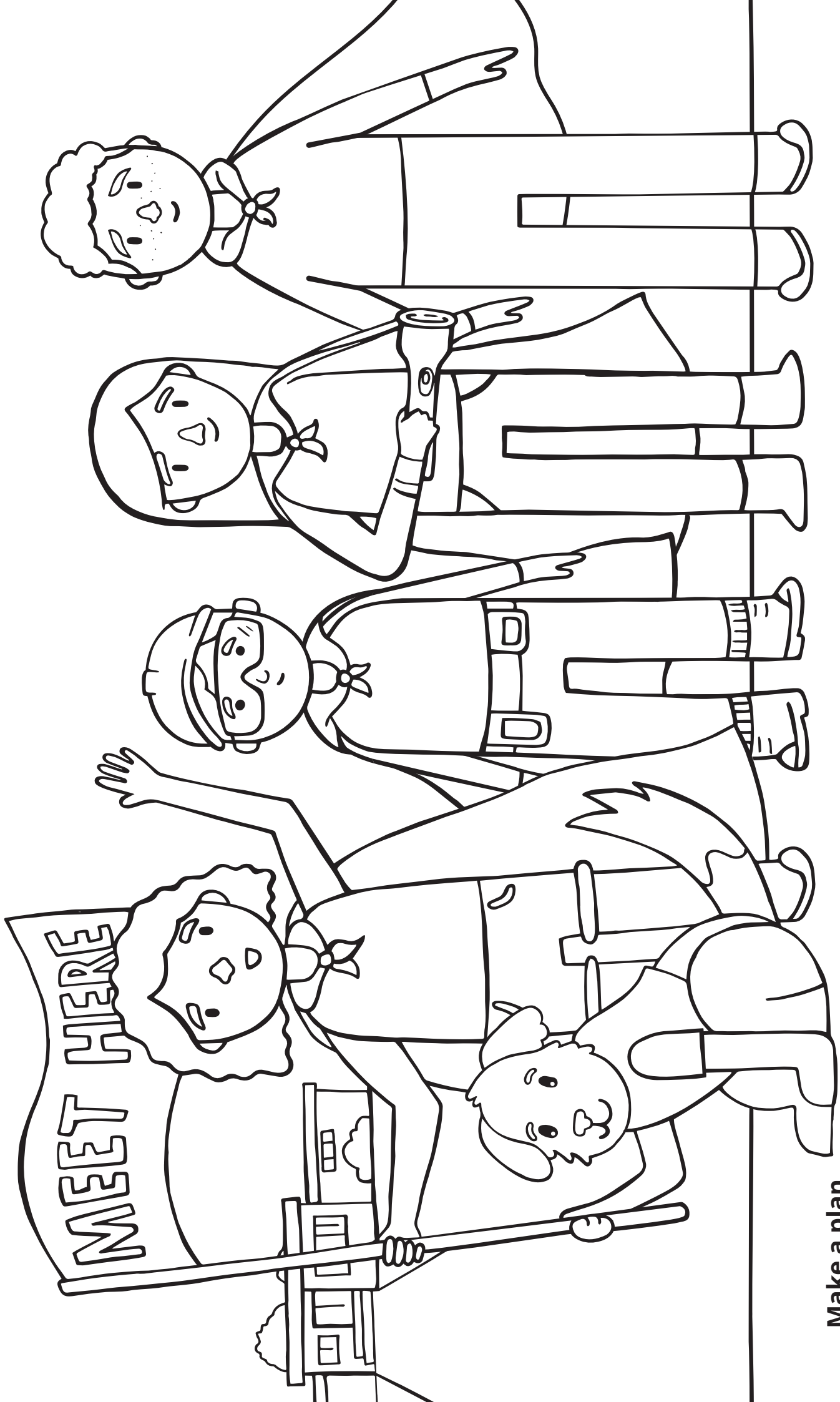


Get your household ready for an emergency
Whakaritea tō kāinga mō te ohotata

CAN YOU SPOT
THE GRAB BAG?

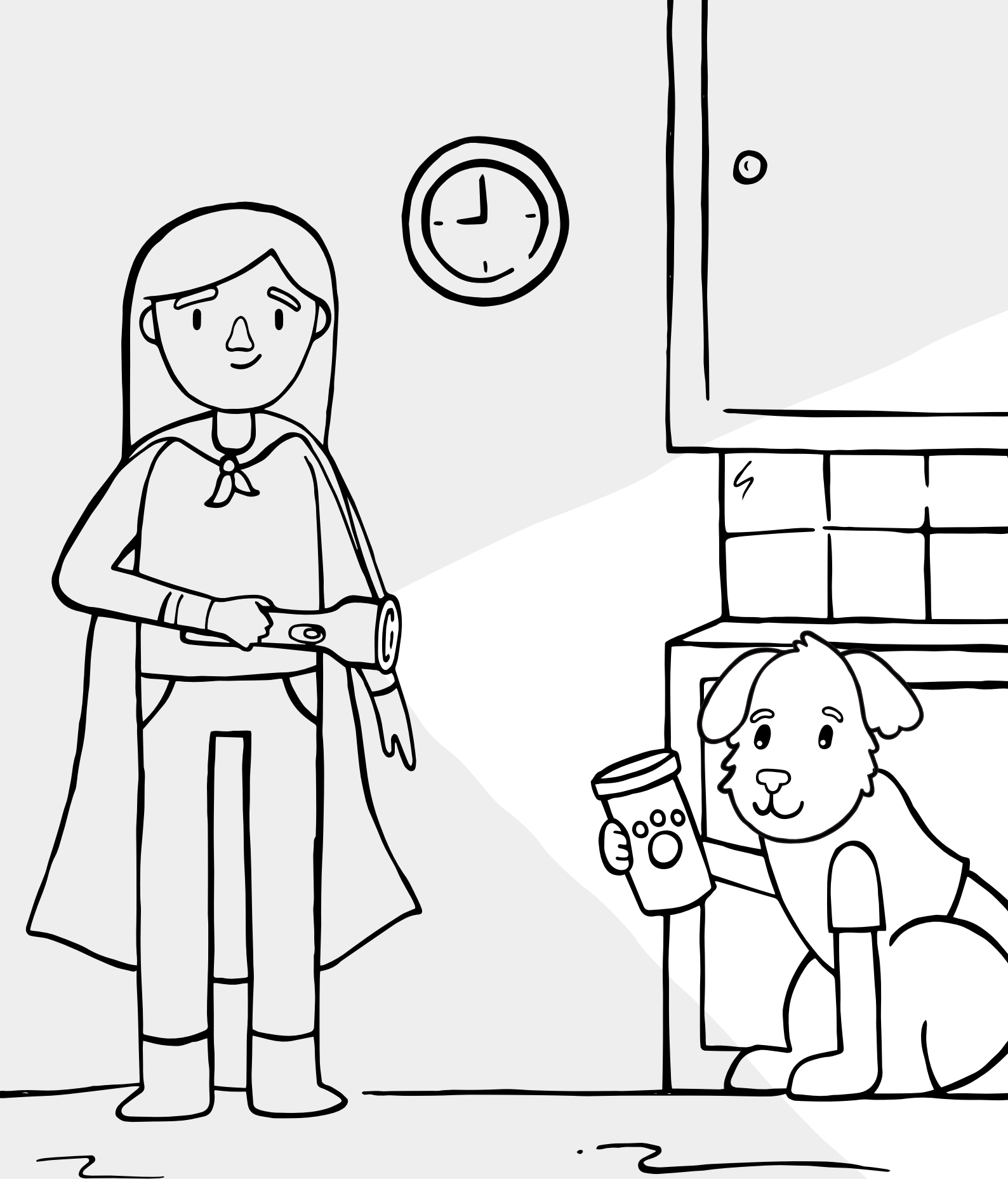


Work out what supplies you need
Whiriwhiria ngā rawa ka hiahiatia



Make a plan

Whakaritea he mahere



Find supplies in the dark

Te kimi ratonga i roto i te pōuri

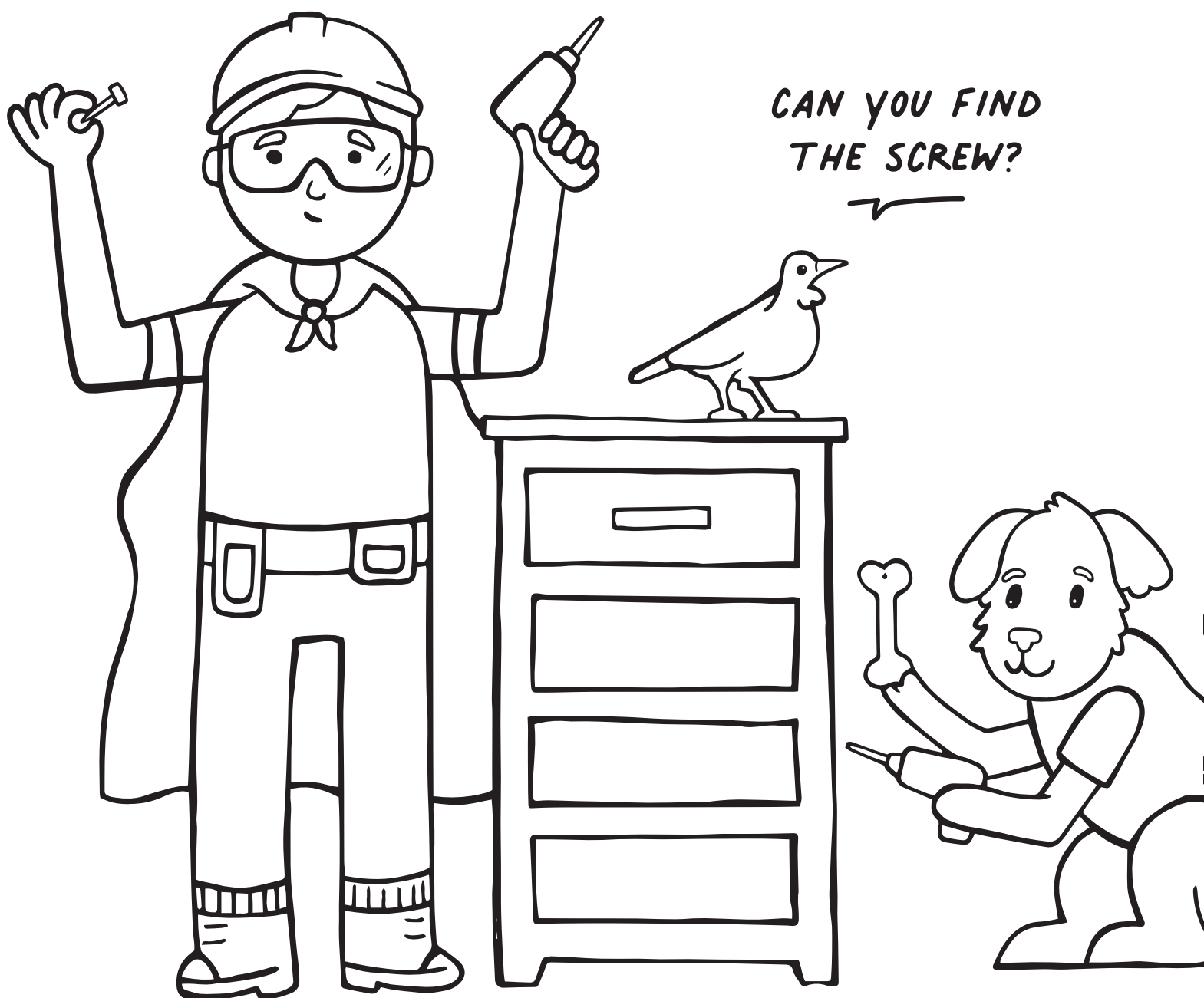


**DROP
COVER
HOLD**

Drop, Cover and Hold

Pāheke, Hīpoki me Pupuri

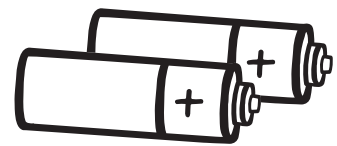
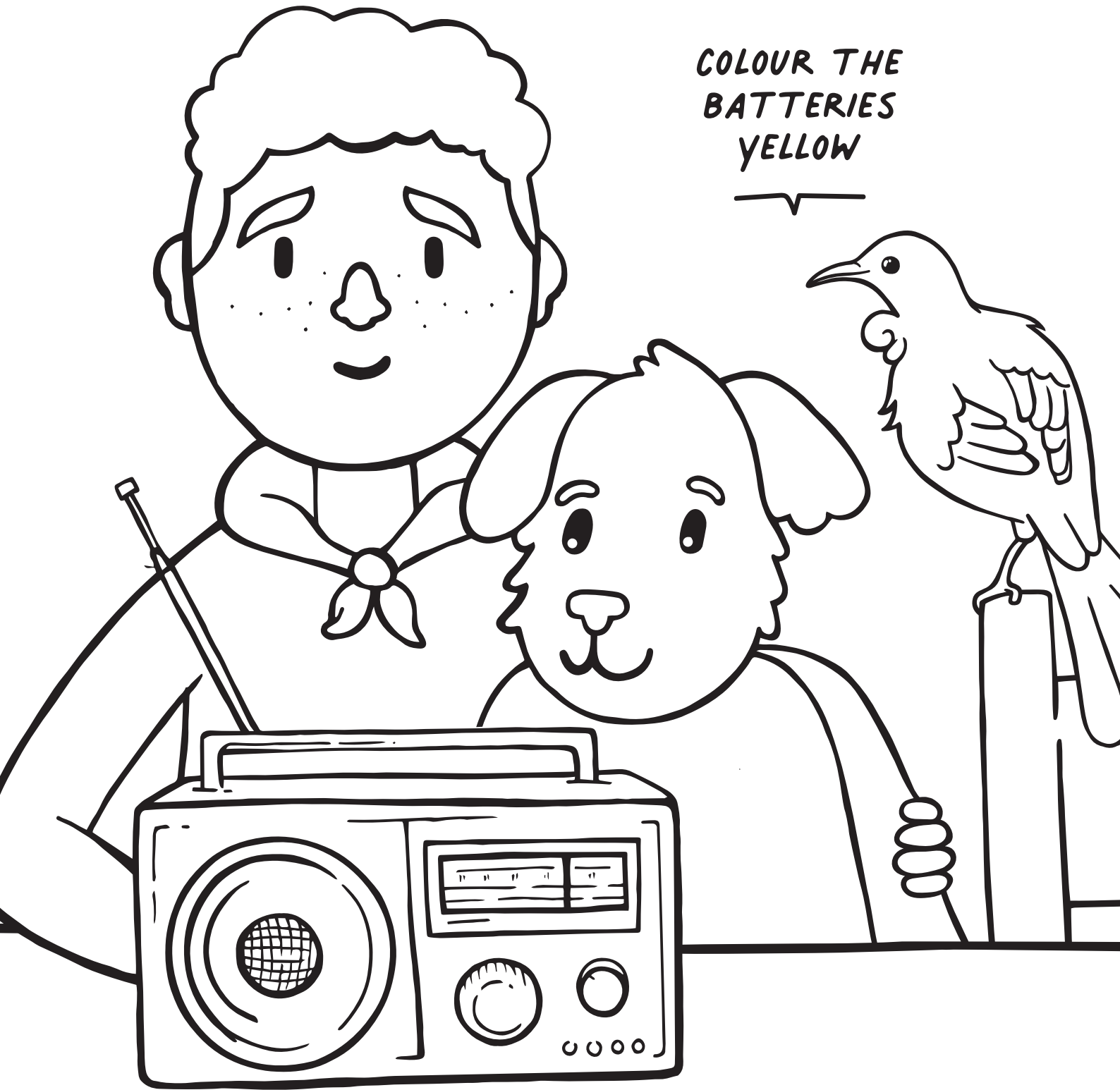
FIX. FASTEN. DON'T FORGET.



Make your home safer

Te whakarite i tō whare kia haumaruru ake

COLOUR THE
BATTERIES
YELLOW



Stay informed
Me rapu mōhiohio





STAY AWAY!

Landslides

Ngā Horo Whenua

Tsunami

Ngaru Taitoko





Storms

Ngā Āwhā

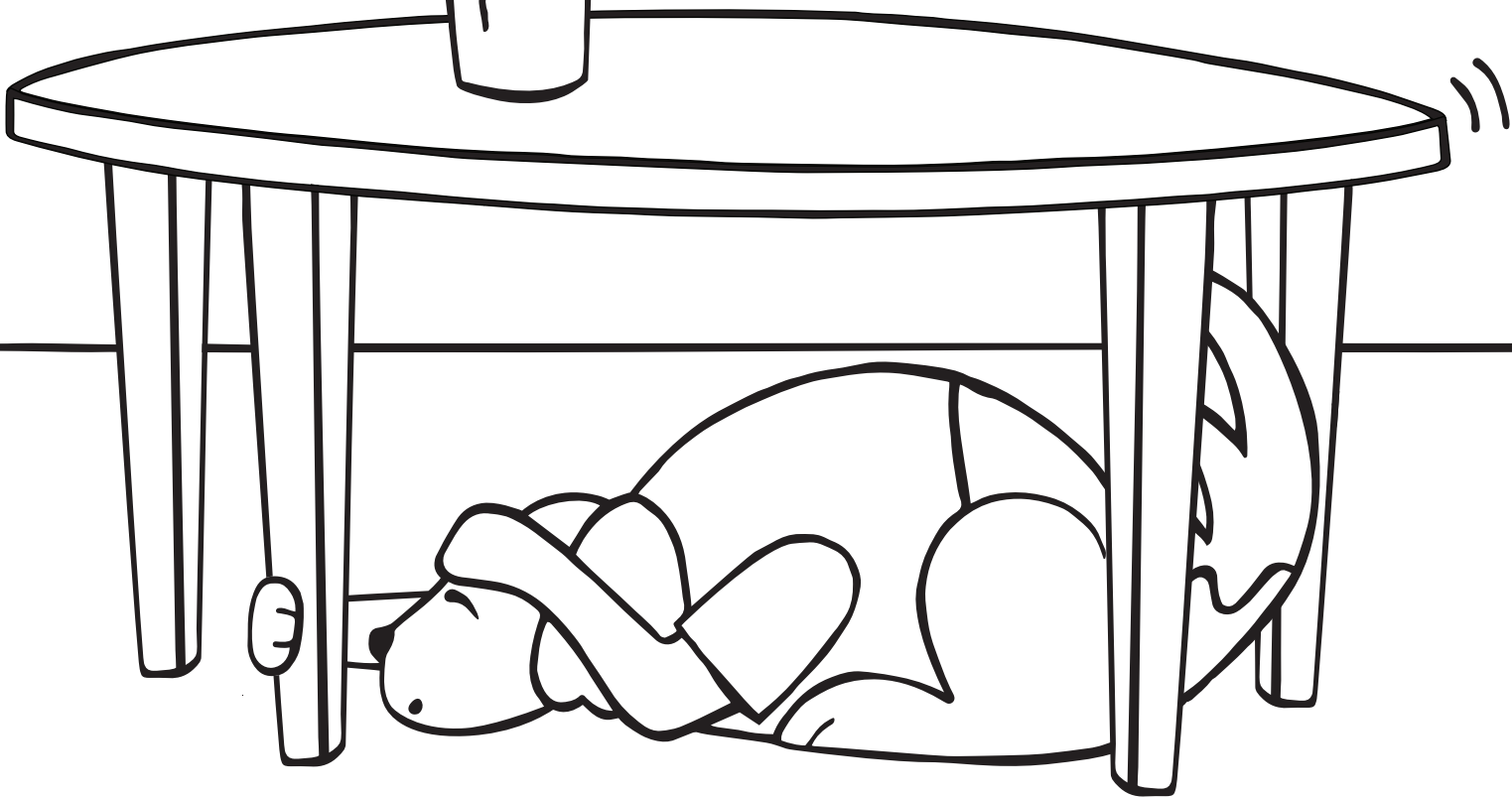
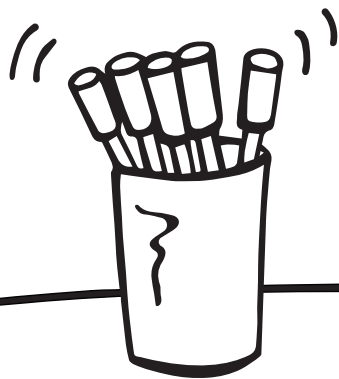
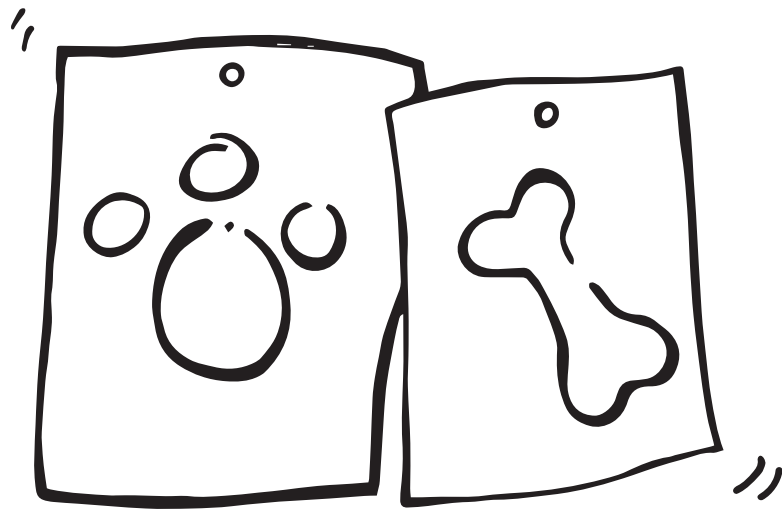


Floods
Ngā Waipuke





Volcanoes
Ngā Puia



Earthquakes

Ngā Rū Whenua