



# LIFE AT THE BOUNDARY



**EAST COAST LAB**  
LIFE AT THE BOUNDARY

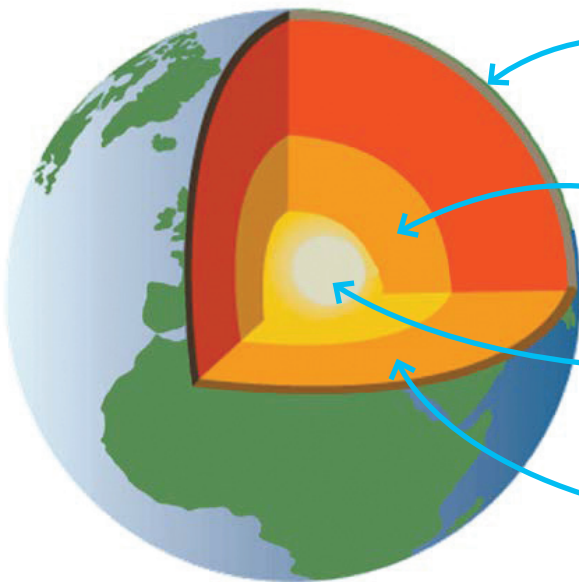
Name: .....

Find the answers to the following questions:

1

## Earth's Structure: What lies beneath us

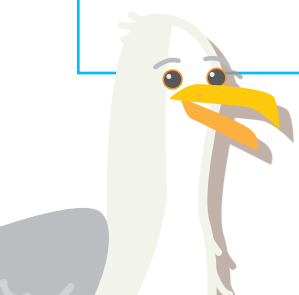
Label the parts of the earth by filling in the blanks



2

## Plates Shift: Together, apart and sliding past

Draw a picture of, and label, the three different types of plate boundaries:



**Extra for experts:**

Label your pictures showing continental and oceanic crust.

3

### Hikurangi subduction zone: **Āinga whakararo ā Hikurangi**

Fill in the gaps:

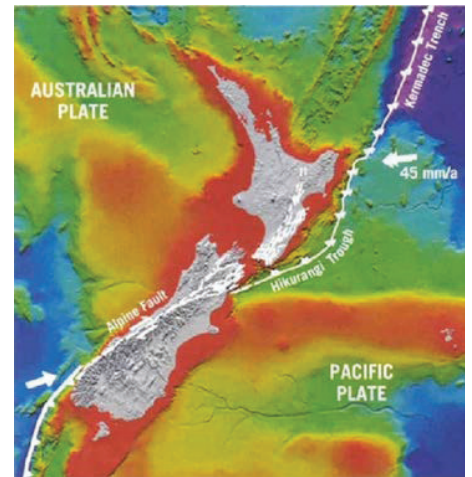
Just off the East Coast of New Zealand lies the

.....  
plate boundary.

This is where the .....

plate is subducting and slowly moving under the

..... plate.



4

### Earthquakes: **Ngā rū whenua**

Explain the following words:

Plates:.....

Epicentre:.....

Focus:.....

Fault:.....

Seismic waves:.....

5

### Tsunami: **Te tai āniwhaniwha**

Fill in the gaps:

Tsunami can be caused by an .....,

....., or .....

Where these disturbances occur in the sea or ocean changes how much warning we will receive. In some cases, the natural warning of an earthquake is the only alert we will get.

If an earthquake occurred at sea, a local source tsunami would arrive in less than  minutes.

If an earthquake occurred at sea, a regional source tsunami would arrive in between  -  hours.

If an earthquake occurred at sea, a distant source tsunami would arrive in more than  hours.



**REMEMBER**  
 if you are near the coast and feel a  
**LONG**  
 (longer than a minute) or  
**STRONG**  
 (hard to stand up) earthquake  
**GET GONE**  
 move immediately to high ground, or as far in inland as you can.

6

## Be prepared: Me noho takatū

Complete the word find below to find items that you might need in an emergency:

Water

Food

Torch

Batteries

First Aid Kit

Toilet paper

Pet food

Baby food

Shoes

Clothes

Dust marks

(Important) Papers

Medicines

Radio



You probably have most of these things already, and you don't have to have them all in one place, but you might have to find them in a hurry and/or in the dark so it is good to know where they are.

P	G	E	B	A	B	Y	F	O	O	D
E	P	A	P	E	R	S	O	T	R	E
T	A	W	A	T	E	R	O	D	Y	G
F	I	R	S	T	A	I	D	K	I	T
O	M	E	D	I	C	I	N	E	S	O
O	B	A	T	T	E	R	I	E	S	R
D	E	T	R	A	D	I	O	T	H	C
H	C	L	O	T	H	E	S	R	O	H
T	O	I	L	E	T	P	A	P	E	R
U	D	U	S	T	M	A	S	K	S	!

What do the remaining letters spell out?

.....



### Homework:

Take this sheet home and talk with your whānau about what your emergency plan is.

### Some questions you could ask are:

- Where will we meet in an emergency?
- What do we do if we aren't at home?
- Do we have supplies for an emergency?